

Clinical Affiliations Orientation Handbook Advocate South Suburban Hospital



Sade Adekoya DNP, MSN, RN, NPD-BC

Nursing Professional Development Specialist
Undergraduate Student Clinical Affiliations Coordinator

Phone: 708-213-3956

Email: Folasade.Adekoya@aah.org

Fax: 708-213-0109

Dana Murphy MSN, RN, NPD-BC

Nursing Professional Development Specialist
Graduate Student Clinical Affiliations Coordinator

Phone: 708-213-3507

Email: Dana.Murphy@aah.org

Fax: 708-213-0109

Table of Contents


About Advocate South Suburban Hospital	p. 3-4
Organizational Structure	p. 5
Using the Phone System & Plain language Emergency Alerts	p. 6
Directions to Advocate South Suburban Hospital	p. 7
Campus Maps	p. 8
Other Clinical Experience Requirements: <ul style="list-style-type: none">• Student ID Badges• Parking• Dress Code/Professional Appearance	p. 9-11

About Advocate South Suburban Hospital




Advocate South Suburban Hospital has provided high-quality, compassionate care to the residents of Hazel Crest and the surrounding community since 1971. Our board-certified physicians have expertise in more than 50 subspecialties, including advanced heart attack and stroke care and advanced levels of treatment in surgery that serves as a model for other health care providers. Advocate South Suburban is a Designated Primary Stroke Center. Our Emergency Department team care model and triage delivery system minimize wait time and enhance care coordination, while our multi-disciplinary approach to in-patient care optimizes discharge planning and bedside engagement between providers, patients and family members. Advocate South Suburban is part of Advocate Aurora Health, the 10th largest not-for-profit, integrated health system in the United States. We help people live well.

Overview


 231 Beds

 700 Physicians – 60 Subspecialties
600 Nurses

 1,100 Team Members


 100 Volunteers

 45,000+ Emergency Visits

 10,000+ Inpatient Admissions

 800 Deliveries

 141,000+ Outpatient Visits

 6,500 Surgeries

Accolades



Stroke Care
Certified as a Primary Stroke Center by
DNV Health Care Inc.



American Heart Association/American Stroke Association's Get with the Guidelines® Stroke Gold Plus Achievement Award recognizing the hospital's commitment and success in implementing a higher standard of stroke care and the Target: Stroke Elite Honor Roll Award



Environmental Stewardship
2017 and 2018 Practice Greenhealth



Physician/Nursing Practice
Health outcomes performance in the top quartile of the country for heart failure, heart attack, pneumonia and surgical site infections

 Advocate South Suburban Hospital

Call 1.800.3.ADVOCATE (1.800.323.8622) to make an appointment, or visit advocatehealth.com/ssub for more information.

We are AdvocateAuroraHealth



The Elizabeth Karnes Vaughan Chapel

The Elizabeth Karnes Vaughan Chapel is located on the main floor of the hospital. The chapel in the round design was specifically chosen to give all who enter a feeling of welcome and of being embraced. The lotus petals in the ceiling reflect this theme and focus attention on the circular altar. Four corner niches in the chapel provide space to showcase symbols representing four major religions. These symbols include the Christian tabernacle, the Jewish menorah, the Hindu Lord Shiva, and the Muslim Holy Qur'an.

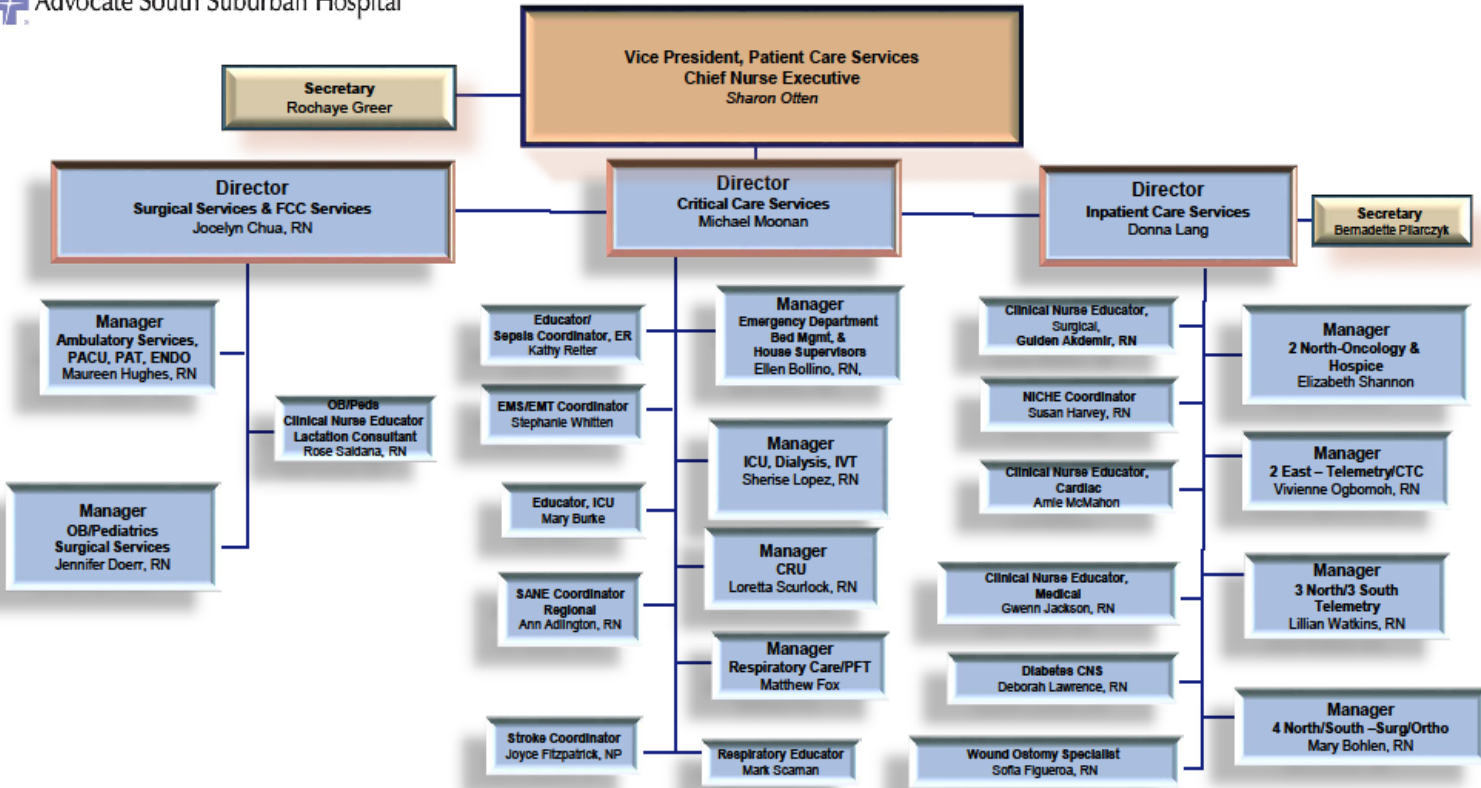
We invite you to use our interfaith chapel as a quiet place for prayer and reflection and to read from the Holy Bible on the altar or the Holy Qur'an, located in the northeast corner niche.

Meditation Room

A non-denominational room for prayer and meditation is located off the hospital's main lobby, and is open to patients, visitors and hospital associates all hours of the day and evening.

Organizational Structure

Advocate South Suburban Hospital



G:\AD\Shared\organ.charts
revised 2/2019

Alcatel Telephone System

Quick Reference Guide

The telephone number for
Advocate South Suburban Hospital is 708-799-8000

To Make an Internal Call:

Dial the 6-digit extension number. The prefix for
South Suburban Hospital is “46”,

To Make an External Call:

Dial 9 for an outside line, then the telephone number.

Plain Language Emergency Alerts Standardization

Please refer to the system orientation handbook (page 13) for specific emergency notification verbiage.

Four plain language CATEGORIES – Facility Alert, Medical Alert, Security Alert, Weather Alert.

These will serve as the CORE ANNOUNCEMENT for all emergency notifications (e.g. pager, test, overhead announcement)

Following the Core Announcement, the type of actual emergency (in plain language) and location will be communicated. Example: “Medical Alert – Rapid Response Team – Unit 40 – Room ----”
orientation handbook

Directions to South Suburban Hospital

Advocate South Suburban Hospital is located at 17800 South Kedzie Ave. in Hazel Crest, a south suburb of Chicago.

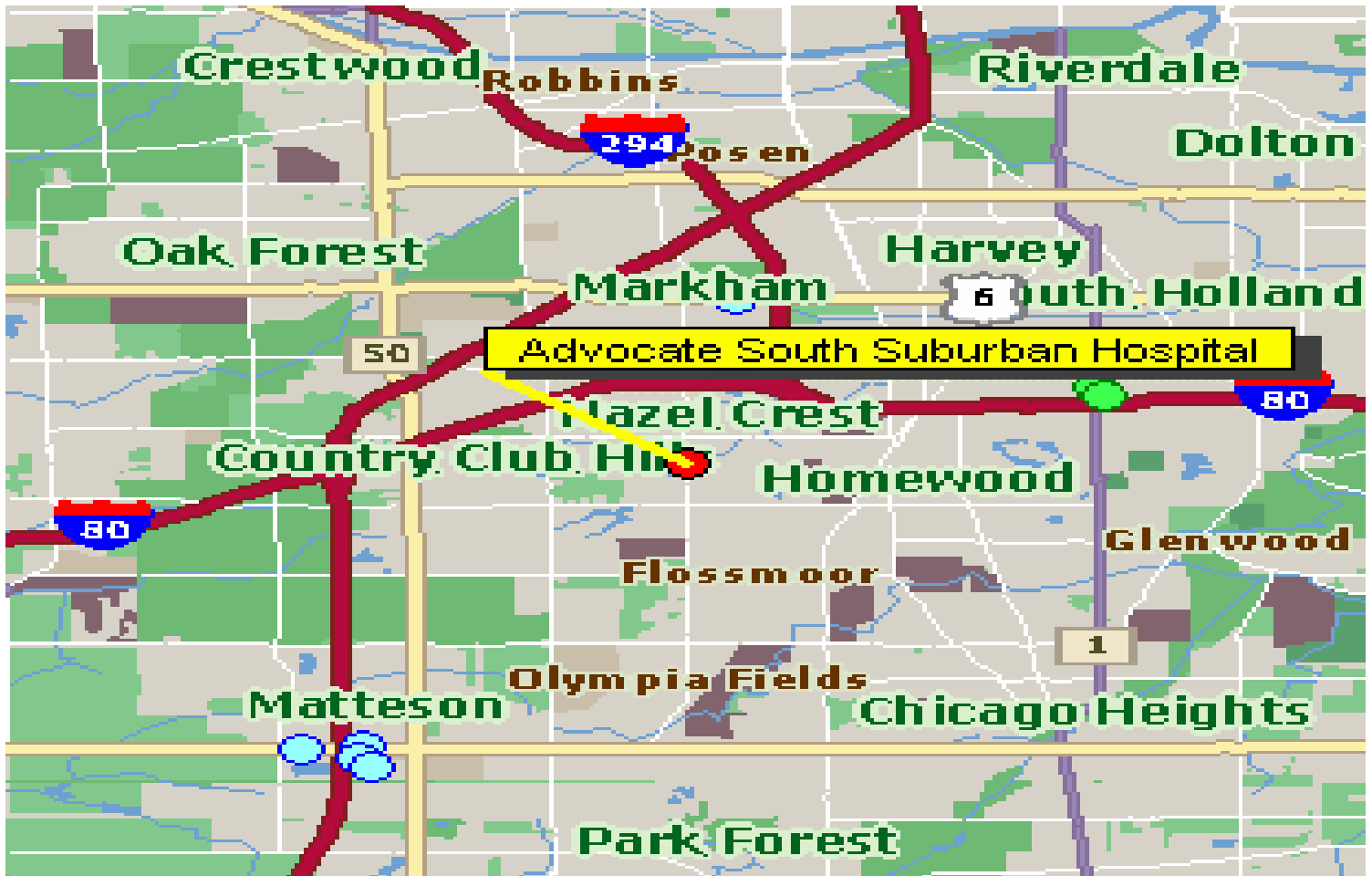
From Chicago, take the Dan Ryan Expy. (I-94) east, which merges into I-57 south. Continue south on I-57 and exit at 167th Street east. Continue east to Kedzie Ave. and turn south. Proceed south on Kedzie to the hospital.

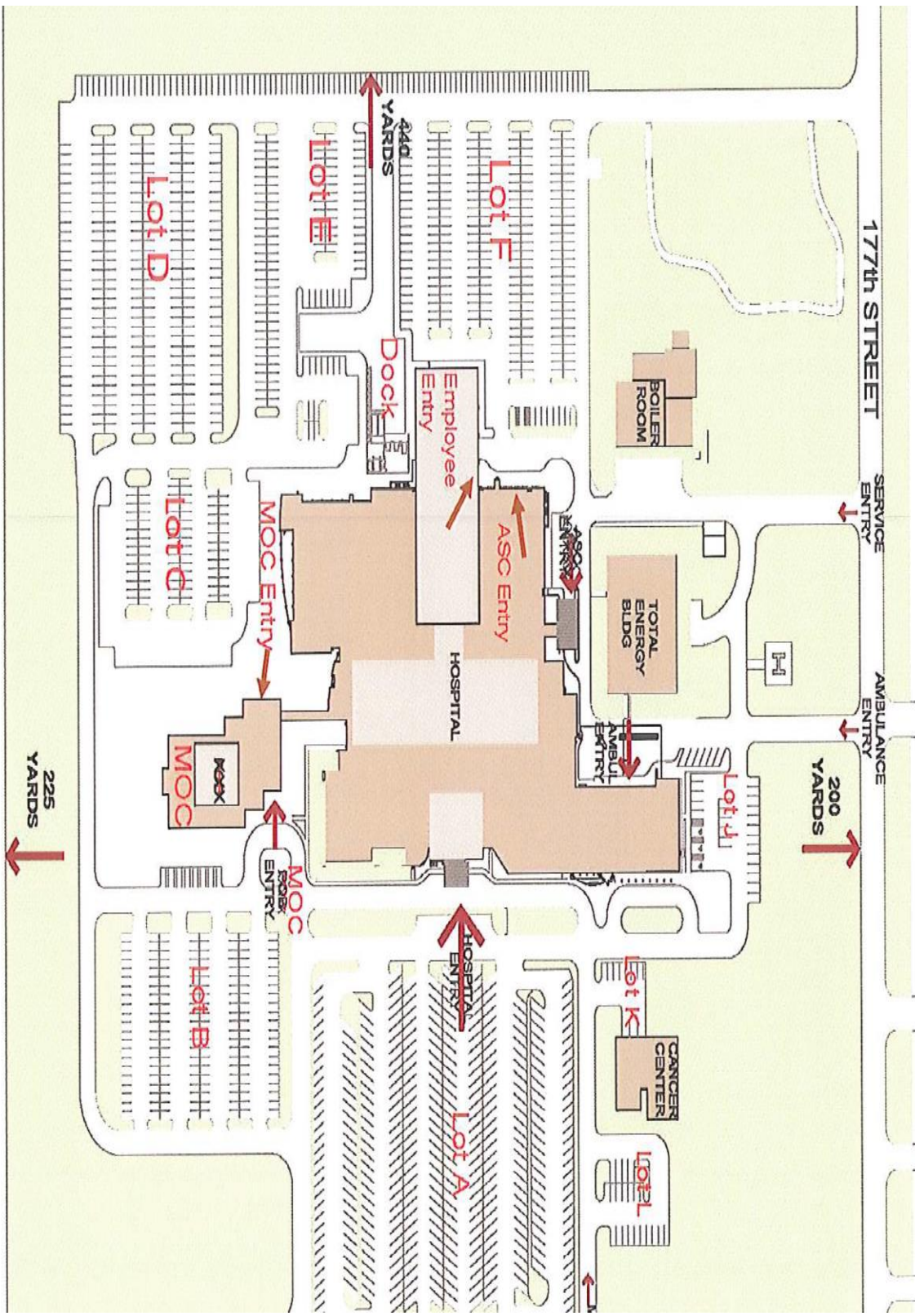
From the northwest, take the Tri-State Tollway (I-294) south and exit at 159th St. west. Continue west to Kedzie Ave. and turn south. Proceed south on Kedzie Avenue to the hospital.

From the south, take I-57 north to Vollmer Rd. Go east on Vollmer Rd. to Kedzie Ave. and go north. Continue north on Kedzie Ave. to the hospital.

From the east, take I-80 west to Halsted St. / Harvey exit south. Go to 183rd St. and turn west. Continue west on 183rd Street to Kedzie Ave. Turn north on Kedzie and proceed to hospital.

From the west, take I-80 east to Kedzie Ave. Exit south on Kedzie Ave. and proceed to the hospital.





STUDENT EXPECTATIONS AND DRESS CODE

- Protect Security of EPIC access password, sign-on, log off, patient health information
- Turn cell phones off while providing patient care.
- Wear the Advocate **Identification badge** at chest level at all times. Badges **MUST BE** returned at end of clinical
- Dress** in a professional manner following the respective School of Nursing Uniform Policy and be clearly identified as a student nurse. Students should **not** wear green scrubs unless in surgery or providing obstetrical care.
- Be prepared to work in the clinical setting in a safe manner that demonstrates **professional standards and behavior**.
- If a student **becomes ill** or is injured while in clinical a Rapid Response may be called, or they may be taken to the emergency room for assessment/treatment. Emergency outpatient treatment will be available to students while in the hospital for clinical training, in case of accident or illness the hospital shall not bear the cost of the emergency treatment.
- Badges:**
- Students are required to wear an ID badge at ALL times while in clinical.

Please click on the link below for more resources related to Clinical Placements

<https://www.aurorahealthcare.org/education/nursing-clinical-placement/>



The screenshot shows the Aurora Health Care website. At the top, the logo "Aurora Health Care" is on the left, and navigation links "Services & Specialties", "Patients & Visitors", "Appointments", and "Search" are on the right. Below the navigation is a dark blue banner with the text "Together, let's live well. [Get your COVID-19 vaccine](#) and [see our current visitor policy](#)." Below the banner is a large image of a diverse group of healthcare professionals in scrubs, with the text "Nursing & MA Clinical Placement" overlaid. Below the image is a breadcrumb trail: "Home > Education > Nursing & Medical Assistant Student Clinical Placement...". On the left side, there is a sidebar menu with "Education" selected, and sub-items "Place clinical group" and "Place precepted students". The main content area has the heading "Nursing & Medical Assistant Student Clinical Placement" and an "IMPORTANT:" notice: "Please review the information on this site carefully as Wisconsin and Illinois site specific information is below."